

22 maggio 2024

Informazioni Generali

Patrimonio gest. € 57.000.000
 Livello di rischio MEDIO-BASSO
 Inizio 01/06/2009

Commissioni d'ingresso

Premio Unico 1%
 Lock in 1 anno
 Premio Unico Euro 1.000

Contatti

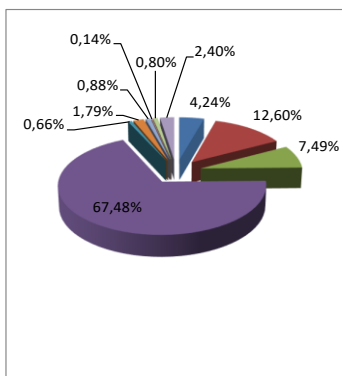
eMail info@baclife.sm
 Tel. 0549 871133
 Interno 9133

Performance

Rendimento	gen	feb	mar	apr	mag	giu	lug	ago	set	ott	nov	dic
2009						2,33%	3,00%	3,07%	3,10%	3,12%	3,00%	3,00%
2010	3,01%	3,03%	3,04%	3,05%	3,05%	3,06%	3,08%	3,13%	3,15%	3,18%	3,18%	3,12%
2011	2,46%	2,27%	1,88%	1,70%	1,76%	1,73%	1,64%	1,58%	1,37%	1,33%	1,34%	1,35%
2012	1,38%	1,43%	1,63%	1,26%	0,90%	0,60%	0,00%	1,50%	2,50%	2,49%	3,22%	3,18%
2013	3,07%	3,08%	3,85%	3,79%	3,66%	3,10%	3,50%	3,53%	3,02%	2,52%	2,38%	2,25%
2014	2,25%	2,28%	2,27%	2,32%	2,36%	2,38%	2,32%	2,29%	2,31%	2,26%	2,22%	2,17%
2015	2,23%	2,25%	2,21%	2,21%	2,20%	2,19%	2,24%	2,29%	2,31%	2,31%	2,33%	2,31%
2016	2,28%	2,28%	2,29%	2,30%	2,28%	2,26%	2,26%	2,24%	2,23%	2,36%	2,24%	2,23%
2017	2,25%	2,27%	2,28%	2,31%	2,31%	2,32%	2,34%	2,38%	2,39%	2,39%	2,45%	2,42%
2018	2,42%	2,40%	2,39%	2,30%	2,22%	2,19%	1,77%	1,31%	1,02%	1,00%	0,96%	0,96%
2019	0,92%	0,87%	0,87%	0,93%	0,98%	1,02%	1,40%	1,83%	1,96%	1,95%	1,96%	1,96%
2020	1,95%	1,96%	1,96%	1,93%	1,93%	1,92%	1,89%	1,86%	2,01%	2,00%	2,00%	1,98%
2021	1,98%	1,97%	1,96%	1,96%	1,95%	1,95%	1,95%	1,95%	1,92%	1,91%	1,90%	1,89%
2022	1,88%	1,87%	1,87%	1,82%	1,86%	1,86%	1,86%	1,88%	1,90%	1,82%	1,97%	1,99%
2023	2,03%	2,07%	2,11%	2,15%	2,18%	2,21%	2,24%	2,27%	2,30%	2,45%	2,32%	2,32%
2024	2,31%	2,28%	2,27%	2,26%								

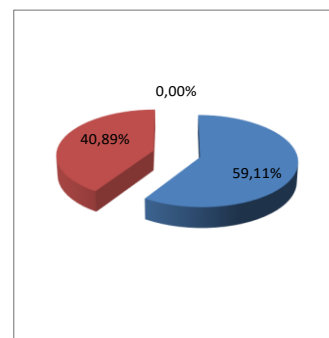
Ripartizione Geografica

Germania	4,24%
Spagna	12,60%
Francia	7,49%
Italia	67,48%
Olanda	0,66%
Giappone	1,79%
Austria	0,88%
Messico	0,14%
Gran Bretagna	0,80%
Stati Uniti	2,40%
Lussemburgo	1,17%
Finlandia	0,35%
Totale	100,00%



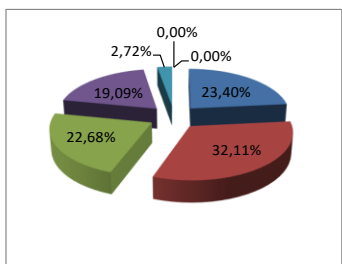
Ripartizione per Market Sector

Government Bonds	59,11%
Corporate Bonds	40,89%
Funds	0,00%
Totale	100,00%



Ripartizione per scadenza

< 1 Anno	23,40%
1-3 Anni	32,11%
3-5 Anni	22,68%
5-7 Anni	19,09%
7-10 Anni	2,72%
> 10 anni	0,00%
Funds	0,00%
Totale	100,00%



Ripartizione per rating Fitch

AAA	0,00%
AA	1,05%
A	9,75%
BB	0,17%
B	0,14%
BBB	87,72%
NR	1,17%
Totale	100,00%

